



Maharashtra Cosmopolitan Education Society's

M. A. Rangoonwala Institute of Hotel Management & Research, Pune.

Affiliated To Savitribai Phule Pune University / Institute code No. : 1042

Email: info@marhotelmanagement.com | Mobile No.: +91 9403 190 762

Dr. P. A. Inamdar
President, M.C.E. Society

Prof. Dr. Anita Frantz
Principal

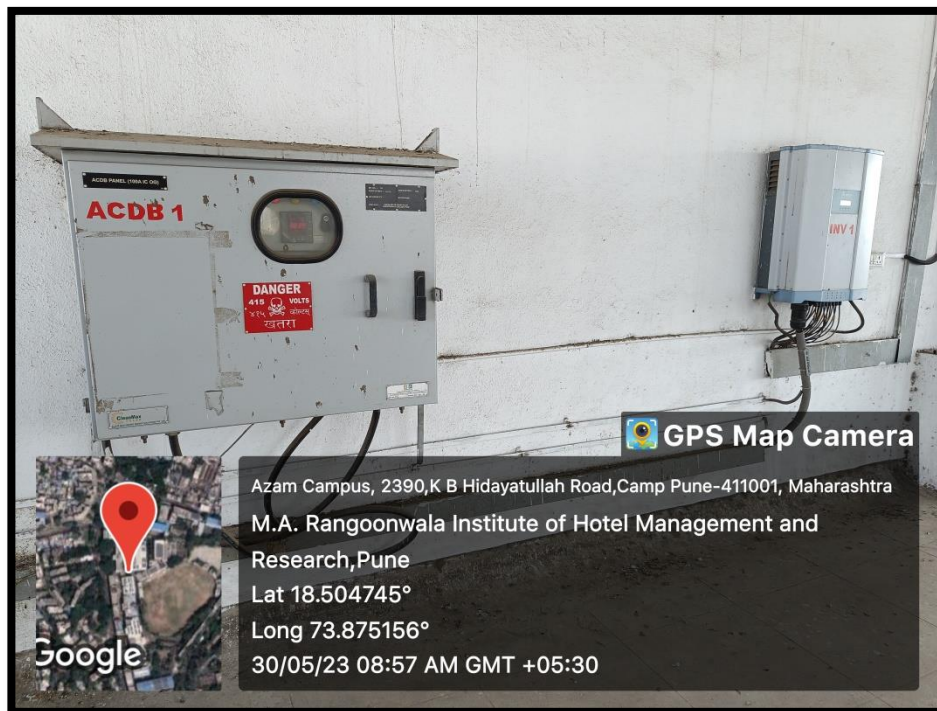
CRITERION – 7	
INSTITUTIONAL VALUES AND BEST PRACTICES	
Key Indicator	7.1 Institutional Values and Social Responsibilities
Metric No.	7.1.2

➤ The Institution has facilities and initiatives for

1. Alternate sources of energy and energy conservation measures
2. Management of the various types of degradable and non-degradable waste
3. Water conservation
4. Green campus initiatives

Geotagged Photographs

Solar Panels at Rooftop of the College



ACDB Panel

Biogas Plant



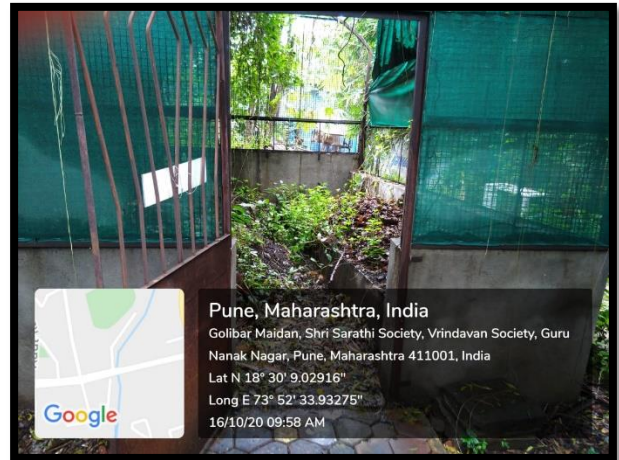
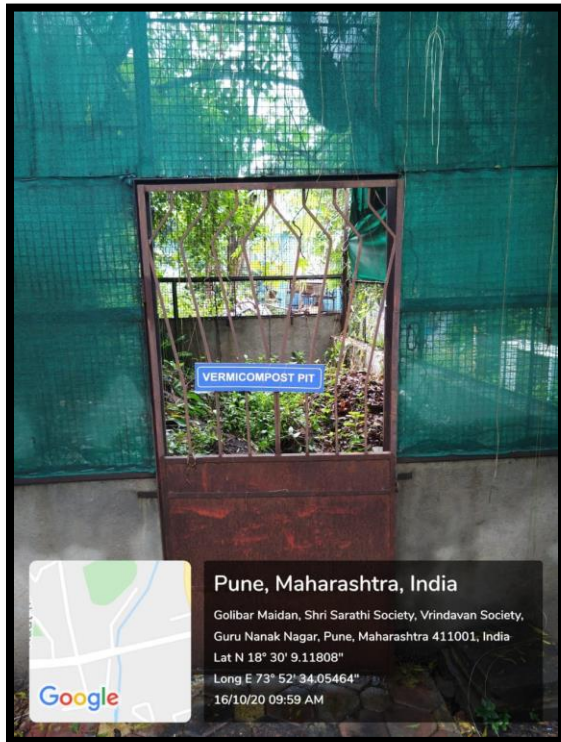
LED Lighting in Corridor



Solid Waste Management-Biogas Plant

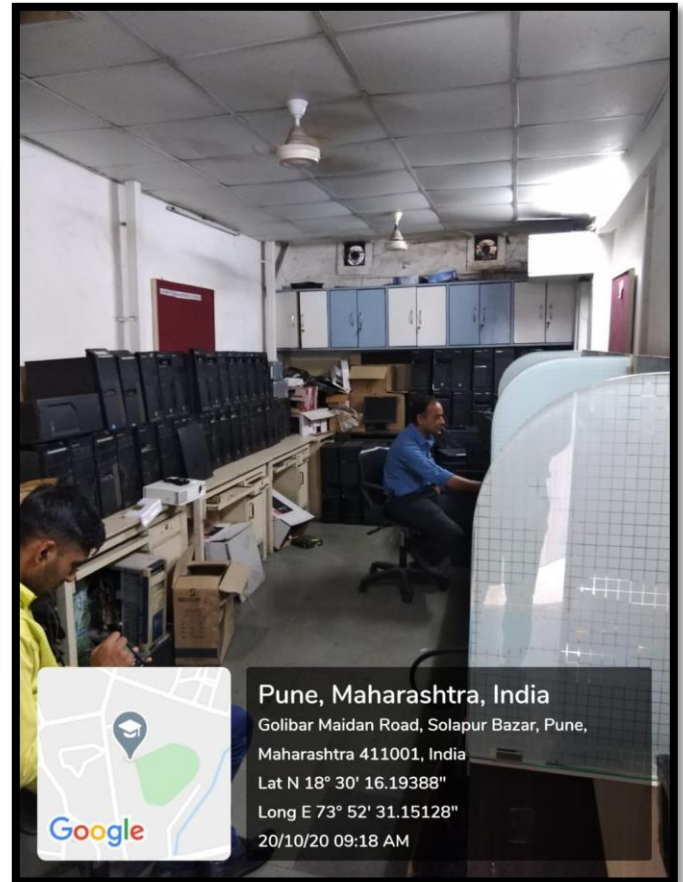
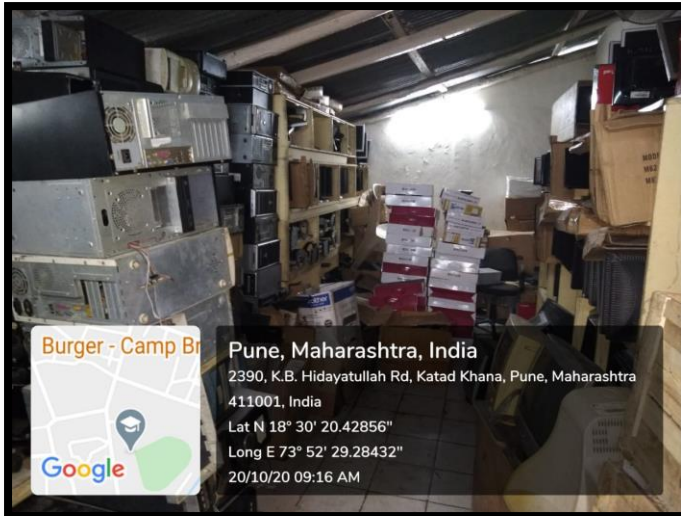


Composting Pits



E-Waste Management

E-Waste Store



Rain Water Harvesting System



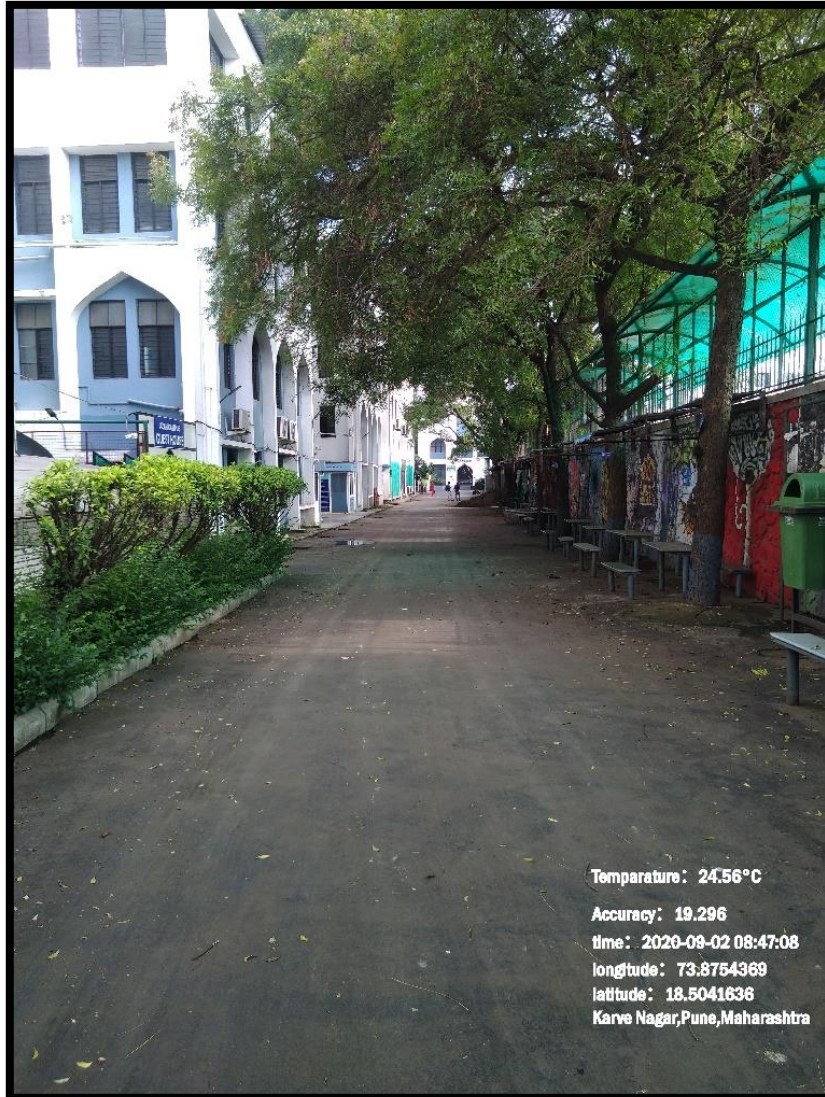
Water Bodies in the Campus



Restricted Entry of Automobiles



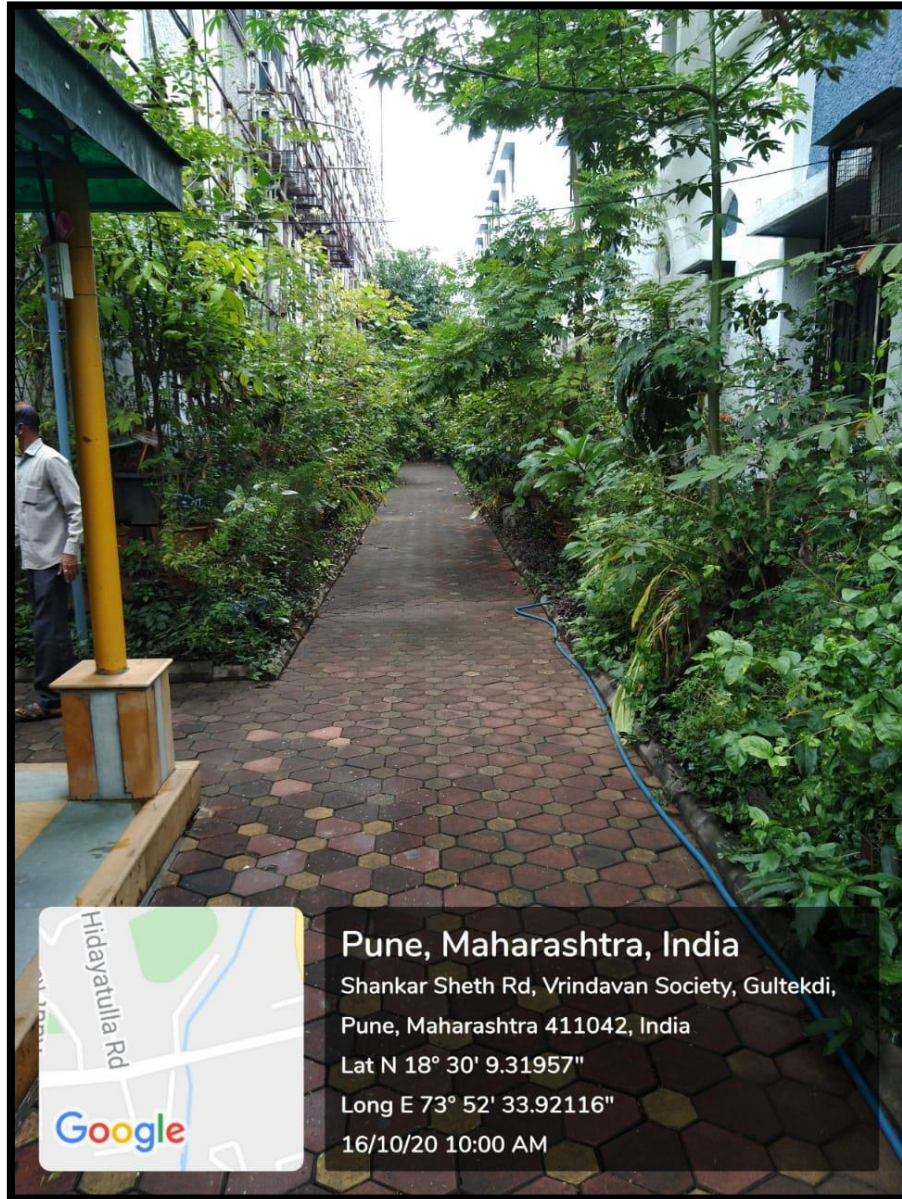
Pedestrian-friendly pathways



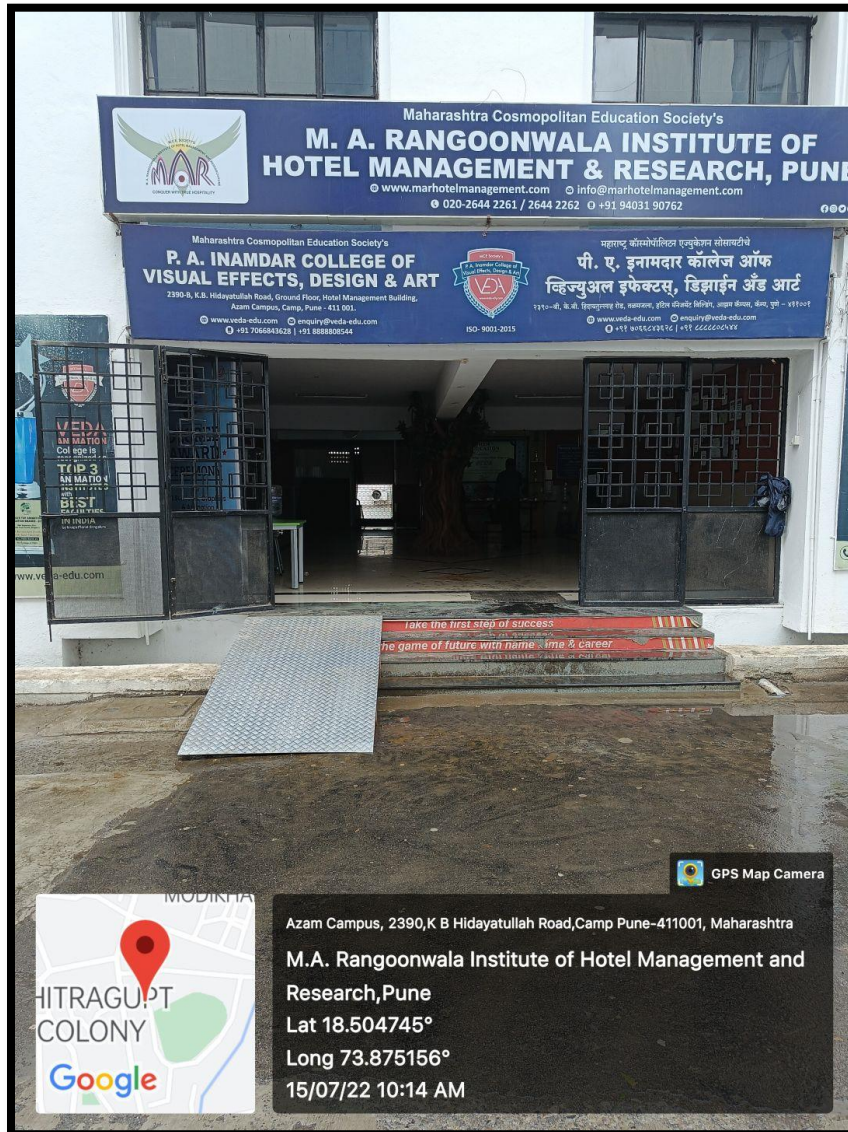
Landscaping with trees and plants



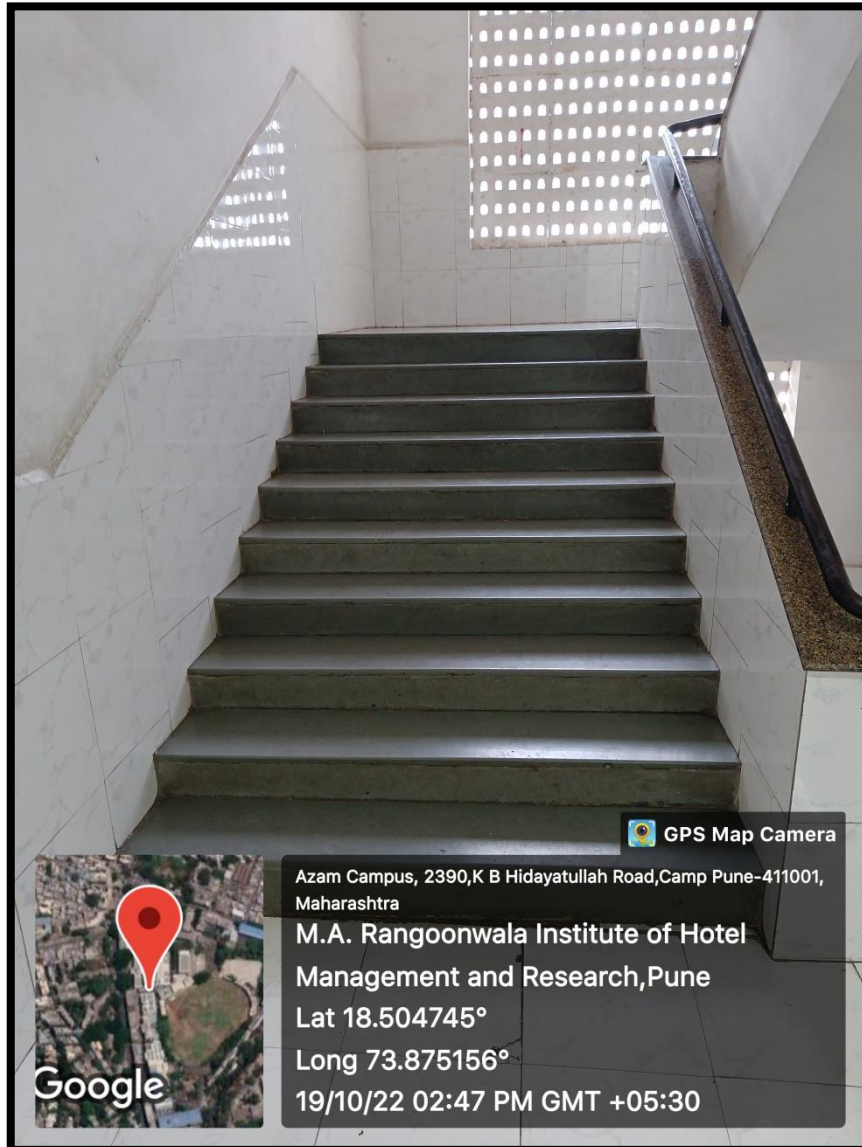
Nursery at Azam Campus



Disabled-friendly, barrier free environment



Ramp at College Entrance



Handrails on the staircases

Grab Bars in girl's and boy's washrooms

